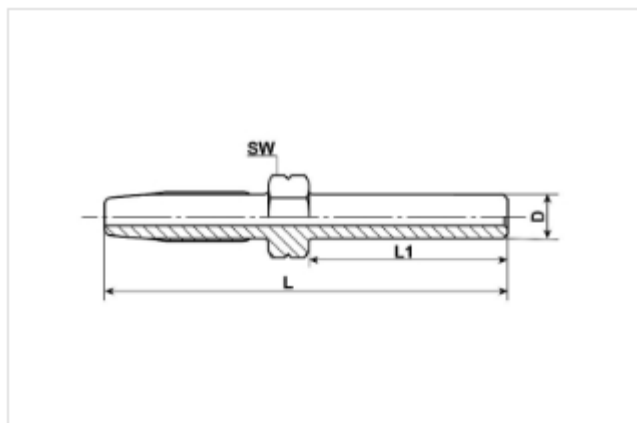


SEPARATING SURFACES SINCE '76

TUBE SOCKETS - TUBE STUDS - HOSE STUDS - MALE STAND PIPES - STRAIGHT



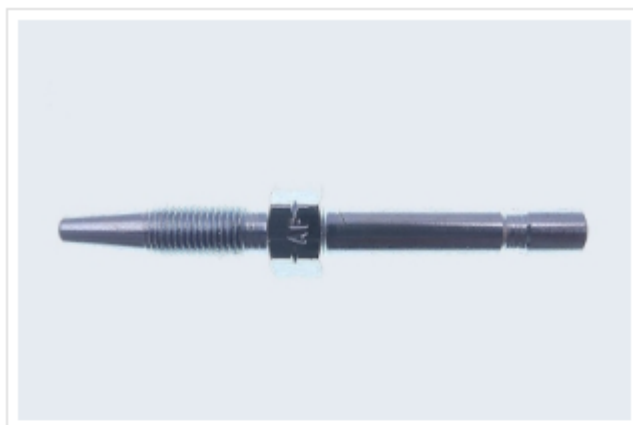
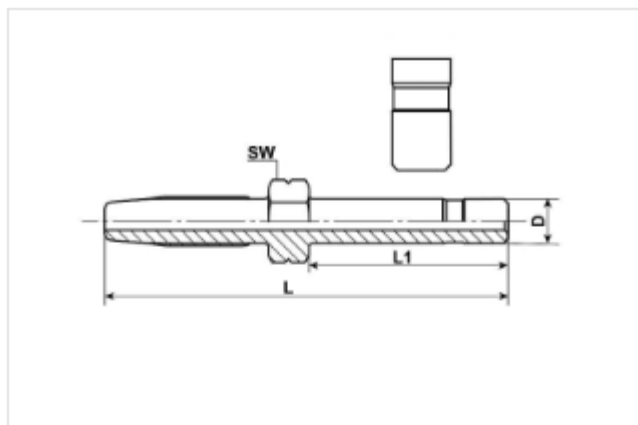
Steel zinc / steel zinc-nickel / CVIF

Item No.	Hose Ø	D	L	L1	SW	Bag	Box
100-054-4	4,1 x 8,75	4	51	20	10	50	500
100-054	4,1 x 8,75	6	51	20	10	100	500
100-055	4,1 x 8,75	6	55	24	10	100	500
100-051	4,1 x 8,75	6	61	30	10	100	500
100-091	4,1 x 8,75	6	96,5	65,5	10	100	500
100-051-8	4,1 x 8,75	8	61	30	10	50	500
3510-110	4,1 x 8,75	1/4"	61	30	11	100	500
3510-113	4,1 x 8,75	3/16"	51	20	10	100	500
100-064	6,35 x 11,3	6	65,5	22	12	50	500
100-074	6,35 x 11,3	8	65,5	22	12	50	500
100-081	6,35 x 11,3	10	73,5	30	12	50	500

Stainless steel 1.4401 / 316 / V4A

Item No.	Hose Ø	D	L	L1	SW	Bag	Box
100-051-VA	4,1 x 8,75	6	61	30	10	25	500
100-064-VA	6,35 x 11,3	6	65,5	22	12	25	250
100-074-VA	6,35 x 11,3	8	65,5	22	12	25	250
100-081-VA	6,35 x 11,3	10	73,5	30	12	25	500

TUBE SOCKETS - TUBE STUDS - HOSE STUDS - MALE STAND PIPES - STRAIGHT



Steel zinc / steel zinc-nickel / CrVIF

Item No.	Hose Ø	D	L	L1	SW	Bag	Box
100-054-NUT	4,1 x 8,75	6	51	20	10	100	500
100-051-NUT	4,1 x 8,75	6	61	30	10	100	500
3510-111	4,1 x 8,75	1/4"	61	30	11	100	500
100-064-NUT	6,35 x 11,3	6	65,5	22	12	50	500
3510-112	1/8" x 5/16"	1/4"	2,09"	1,18"	7/16"	100	500

Stainless steel 1.4401 / 316 / V4A

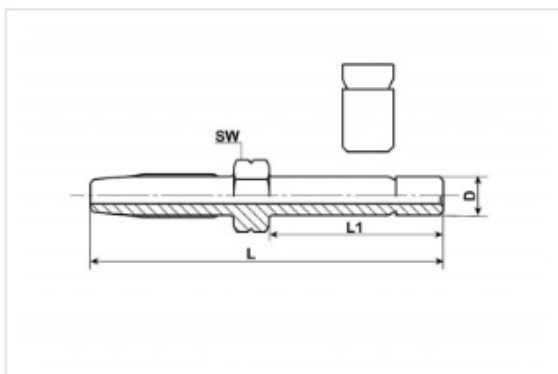
Item No.	Hose Ø	D	L	L1	SW	Bag	Box
3510-142	4,1 x 8,75	6	51	20	10	25	500
3510-141	1/8" x 5/16"	1/4"	53	21,5	7/16"	25	500

Steel zinc / steel zinc-nickel / CrVIF, black

Item No.	Hose Ø	D	L	L1	SW	Bag	Box
100-054-NUT-SW	4,1 x 8,75	6	52,5	21,5	10	100	500
100-051-NUT-SW	4,1 x 8,75	6	61	30	10	100	500

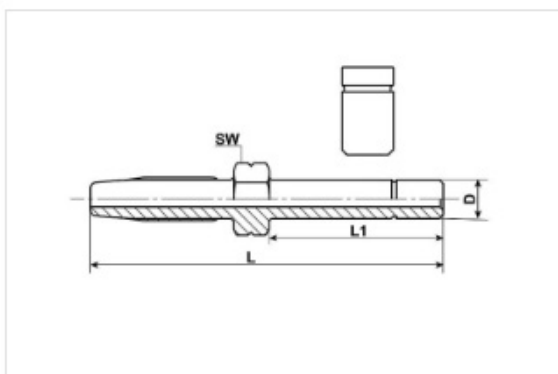
SEPARATING SURFACES SINCE '76

TUBE SOCKETS - TUBE STUDS - HOSE STUDS - MALE STAND PIPES - STRAIGHT



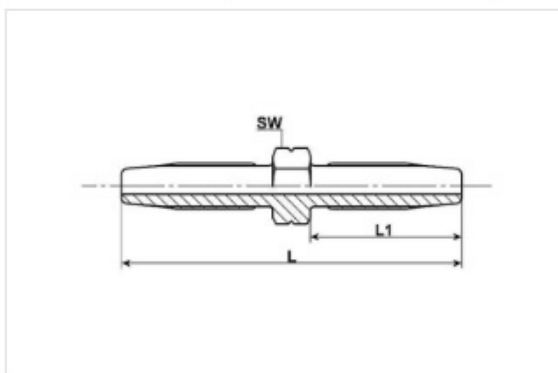
Steel zinc / steel zinc-nickel / CrVIF

Item No.	Hose Ø	D	L	L1	SW	Bag	Box
100-055-NUT-V	4,1 x 8,75	6	55	24	10	100	500



Steel zinc / steel zinc-nickel / CrVIF

Item No.	Hose Ø	D	L	L1	SW	Bag	Box
3510-115	4,1 x 8,75	6	61	30	10	100	500



Steel zinc / steel zinc-nickel / CrVIF

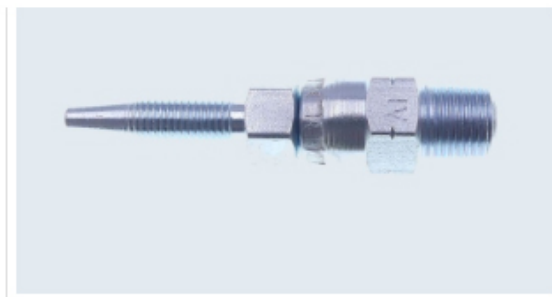
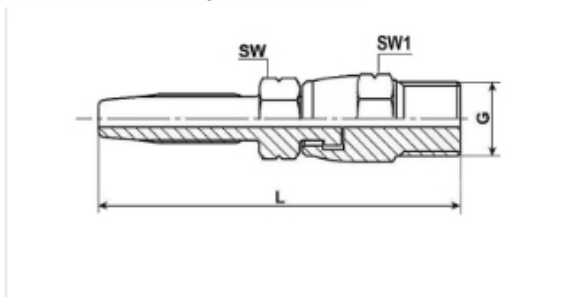
Item No.	Hose Ø	L	L1	SW	Bag	Box
100-061	4,1 x 8,75	56	25	10	100	500

TUBE SOCKETS - TUBE STUDS - HOSE STUDS - MALE STAND PIPES - STRAIGHT

Note:

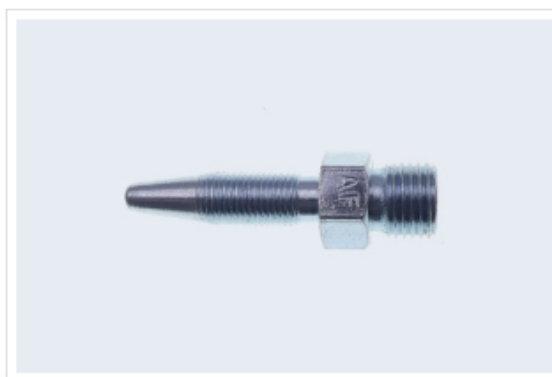
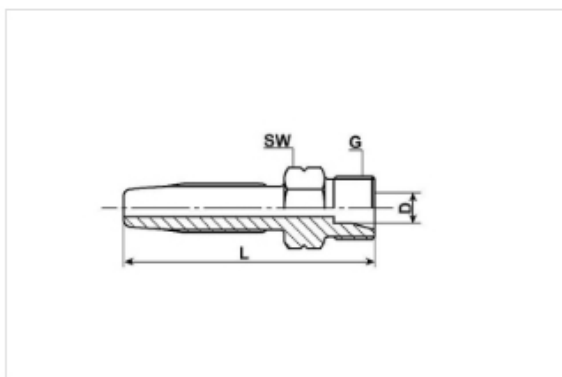
Please use the swivel function of the hose end – NPT swivel exclusively for mounting.

It is not suitable for permanent use.



Steel zinc / steel zinc-nickel / CrVIF

Item No.	Hose Ø	L	G	SW	SW1	Bag	Box
100-051-1	1/8" x 5/16"	56	1/8 NPT	7/16"	1/2"	100	500
3510-140	1/8" x 5/16"	57	1/8 BSPT	7/16"	1/2"	100	500



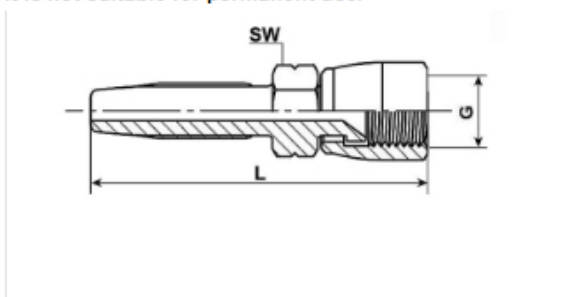
Steel zinc / steel zinc-nickel / CrVIF

Item No.	Hose Ø	G	D	L	SW	Bag	Box
3510-101	4,1 x 8,75	M 10x1	6 LL	39	11	100	500

Note:

Please use the swivel function of the rotatable fitting socket exclusively for mounting.

It is not suitable for permanent use.

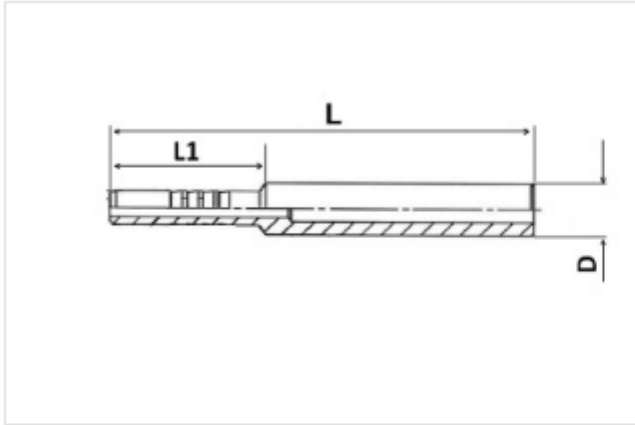


Steel zinc / steel zinc-nickel / CrVIF

Item No.	Hose Ø	G	L	SW	SW1	Bag	Box
3510-114	4,1 x 8,75	JIC37° 7/16	27,5	14	14	50	500

SEPARATING SURFACES SINCE '76

TUBE SOCKETS - TUBE STUDS - HOSE STUDS - MALE STAND PIPES - STRAIGHT

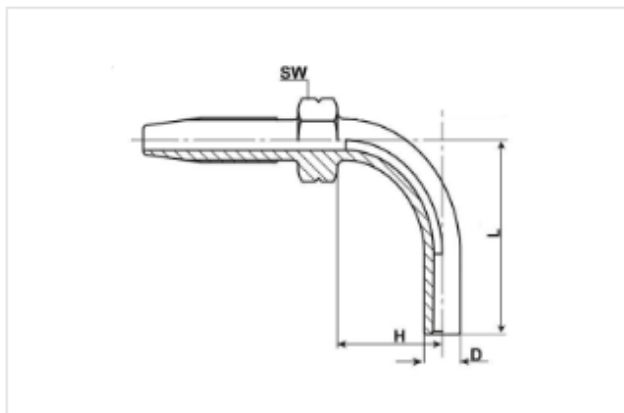


Steel zinc / steel zinc-nickel / CrVIF

Item No.	Hose Ø	D	L	L1	Bag	Box
100-051-press	4,1 x 8,75	6	48,5	16,5	100	1000



TUBE SOCKETS - TUBE STUDS - HOSE STUDS - 90°



Steel zinc / steel zinc-nickel / CrVIF

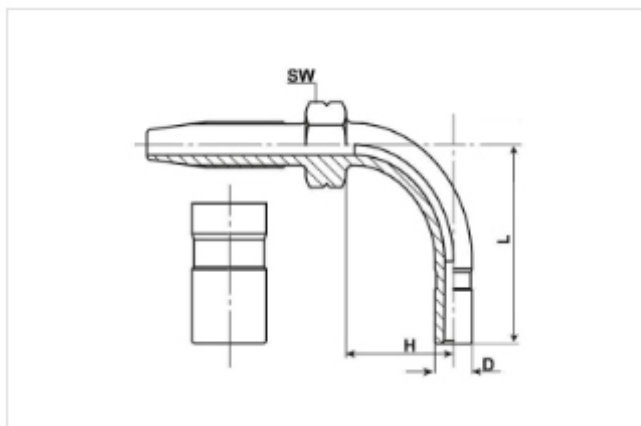
Item No.	Hose Ø	D	H	L	SW	Bag	Box
100-059-4	4,1 x 8,75	4	14	30	10	50	500
100-052	4,1 x 8,75	6	13	21	10	100	500
100-059	4,1 x 8,75	6	14	33	10	100	500
100-062	4,1 x 8,75	6	17	28	10	100	500
100-053	4,1 x 8,75	6	28	37	10	100	500
100-056	4,1 x 8,75	6	28	53	10	100	500
3511-110	4,1 x 8,75	1/4"	28	37	11	100	500
3511-113	4,1 x 8,75	3/16"	14	32	10	100	500
100-063	6,35 x 11,3	6	22	45	12	50	500
100-073	6,35 x 11,3	8	23	36	12	50	500
100-076	6,35 x 11,3	8	23	55	12	50	500
100-083	6,35 x 11,3	10	23	36	12	50	500

Stainless steel 1.4401 / 316 / V4A

Item No.	Hose Ø	D	H	L	SW	Bag	Box
100-053-VA	4,1 x 8,75	6	28	37	10	25	500
3511-210	6,35 x 11,3	6	22	45	12	25	500
100-073-VA	6,35 x 11,3	8	23	36	12	25	250
3511-212	6,35 x 11,3	10	23	36	12	25	500

SEPARATING SURFACES SINCE '76

TUBE SOCKETS - TUBE STUDS - HOSE STUDS - 90°

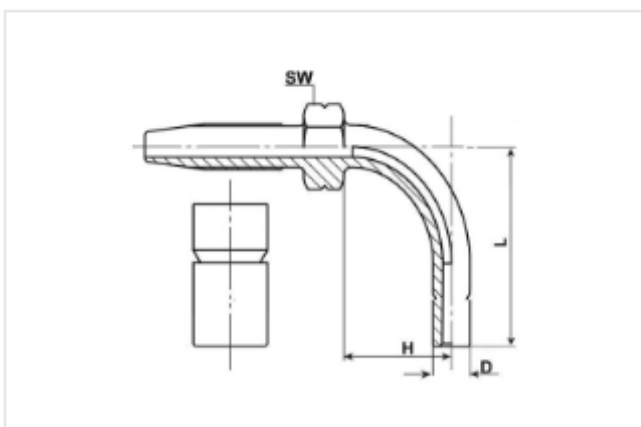


Steel zinc / steel zinc-nickel / CrVIF

Item No.	Hose Ø	D	H	L	SW	Bag	Box
100-053-NUT	4,1 x 8,75	6	25	37	10	100	1000
100-056-NUT	4,1 x 8,75	6	28	53	10	100	500
3511-111	4,1 x 8,75	1/4"	28	37	11	100	500
3511-112	1/8" x 5/16"	1/4"	27 mm / 1,06"	35 mm / 1,38"	11 mm / 7/16"	100	500

Steel zinc / steel zinc-nickel / CrVIF, black

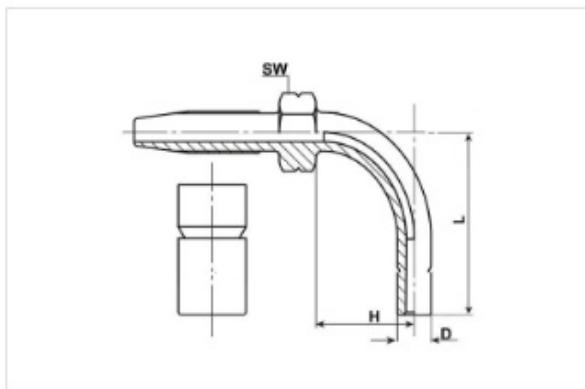
Item No.	Hose Ø	D	H	L	SW	Bag	Box
3511-116	4,1 x 8,75	6	17	28	10	100	500
100-053-NUT-SW	4,1 x 8,75	6	28	37	10	100	500
100-056-NUT-SW	4,1 x 8,75	6	28	53	10	100	500



Steel zinc / steel zinc-nickel / CrVIF

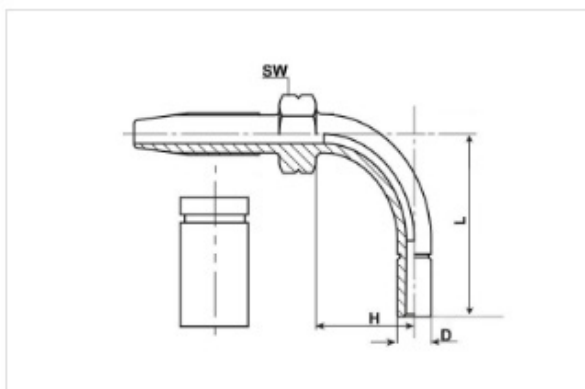
Item No.	Hose Ø	D	H	L	SW	Bag	Box
100-059-NUT-V	4,1 x 8,75	6	14	33	10	25	500

TUBE SOCKETS - TUBE STUDS - HOSE STUDS - 90°



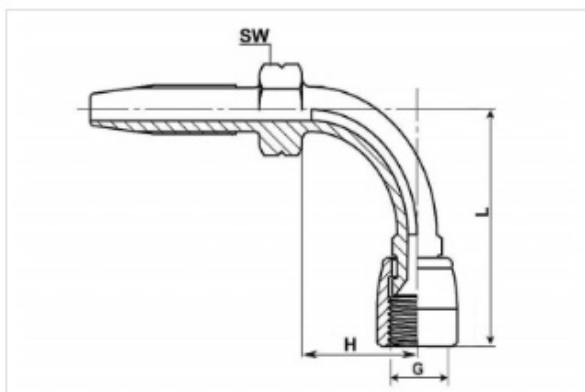
Steel zinc / steel zinc-nickel / CrVIF

Item No.	Hose Ø	D	H	L	SW	Bag	Box
100-059-NUT-V	4,1 x 8,75	6	14	33	10	25	500



Steel zinc / steel zinc-nickel / CrVIF

Item No.	Hose Ø	D	H	L	SW	Bag	Box
3511-115	4,1 x 8,75	6	17	28	10	100	500

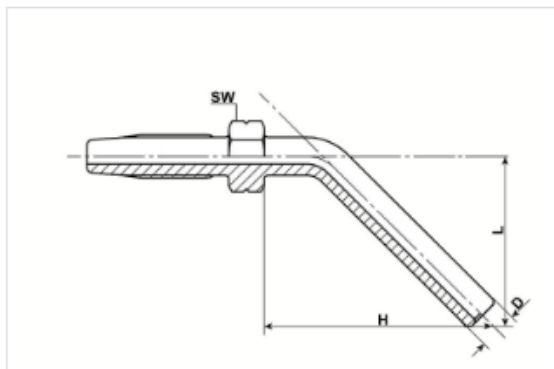


Steel zinc / steel zinc-nickel / CrVIF

Item No.	Schlauch Ø	G	H	L	SW	SW1	Bag	Box
3511-114	4,1 x 8,75 4,1 x 8,75	JIC37°7/16	20,7	25,7	14	14	50	500

SEPARATING SURFACES SINCE '76

TUBE SOCKETS - TUBE STUDS - HOSE STUDS - 45°

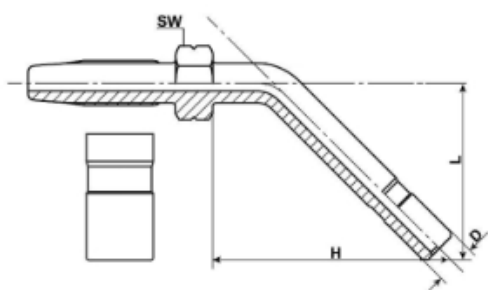


Steel zinc / steel zinc-nickel / CrVIF

Item No.	Hose Ø	D	H	L	SW	Bag	Box
100-057	4,1 x 8,75	6	24	15	10	100	500
100-058	4,1 x 8,75	6	35	25	10	100	500
3512-110	4,1 x 8,78	1/4"	35	25	11	100	1000
100-068	6,35 x 11,3	6	35	25	12	50	500
100-078	6,35 x 11,3	8	35	25	12	50	500

Stainless steel 1.4401 / 316 / V4A

Item No.	Hose Ø	D	H	L	SW	Bag	Box
100-058-VA	4,1 x 8,75	6	35	25	10	25	500



Steel zinc / steel zinc-nickel / CrVIF

Item No.	Hose Ø	D	H	L	SW	Bag	Box
100-057-NUT	4,1 x 8,75	6	24	15	10	100	500
100-058-NUT	4,1 x 8,75	6	35	25	10	100	500
3512-111	4,1 x 8,75	1/4"	35	25	11	100	1000

Steel zinc / steel zinc-nickel / CrVIF, black

Item No.	Hose Ø	D	H	L	SW	Bag	Box
100-058-NUT-SW	4,1 x 8,75	6	35	25	10	100	500