

FLUID HANDLING:

Lubricant Management System

The LMS combines filtration, storage, and breathers to keep lubricants clean and dry. Its fully equipped with dual stage filtration and optional pump timers and level switches so the system can work unattended.



The Overview

The LMS:

Where It's Used

- Lubricant storage
- Dispensing new oil
- Pre-filtering new oil
- Collecting oil samples for analysis

What are the Key Benefits?

- Allows for more valuable floor space
- Allows for use with many lubricant types
- Eliminates cross-contamination
- Stackable design

What is Standard?

- Automatic pressure relief valve
- Dual-stage filtration
- Dedicated pump and motor per tank
- Filter bypass
- 75, 150, & 300 gallon tank options
- Desiccant breathers
- Pump timer
- One-year warranty

Performance

For filtering mineral-based industrial oils and most synthetic oils with a maximum operating viscosity range of ISO VG 460 (2,000ssu/431cSt) at 100°F/38°C within ambient temperature ranges of -8°F to 104°F (-22°C to 40°C).

Materials:

- Stand and Tanks: Carbon Steel
- Paint: Industrial powder coat
- Filter Heads: Aluminum
- Fittings: Zinc plated steel and/or brass
- Pumps: Aluminum/steel
- Internal Plumbing: Nitrile (Buna-N)
- Hoses: Clear PVC with steel wire
- Gaskets: Buna-N

Filter Indicators:

- Filter indicator pops at 22psid (1.55bar) as warning that filter elements need to be replaced.

Pump Relief:

- Opens at 65psi (5.49bar)

Dimensions:

- 75-gallon tank -50.50"L x 30"W x 22"H
- 150-gallon tank -50.50"L x 30"W x 44"H
- 300-gallon tank -50.50"L x 60"W x 22"H

Did You Know?

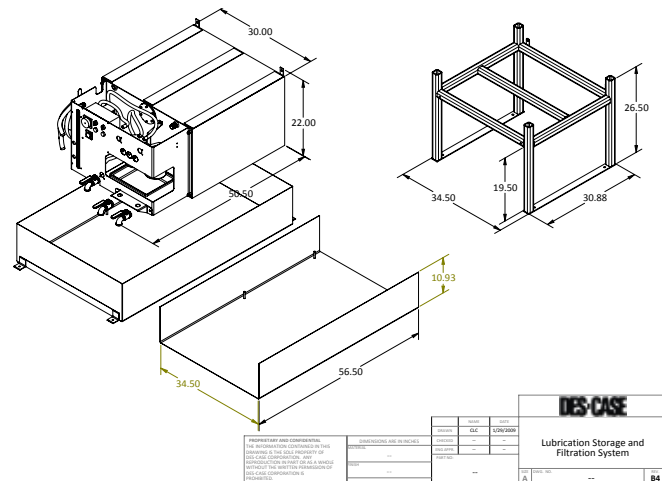
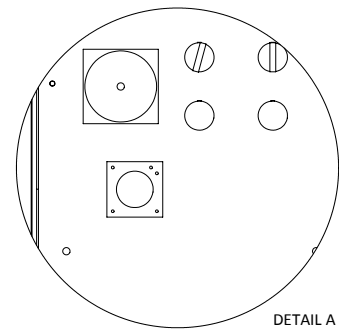
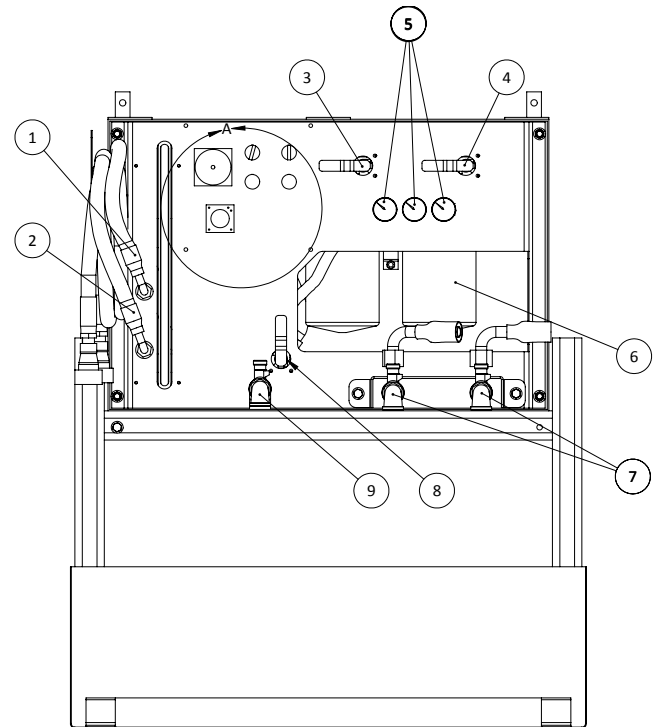
New oil isn't clean. One of the best places to start any improvement is in the lube room. While it may not have the biggest effect on the quality of the lubricant in each machine, it helps to set the tone for the whole lubrication program, changing the way mechanics, lubricators and operators think about lubrication.

The Specs

By The Numbers

Item No.	Description	Qty.
1	Inlet Hose	1
2	Outlet Hose	1
3	Left Ball Valve	1
4	Right Ball Valve	1
5	Pressure Gauges	3
6	Filter Elements	2
7	Remote Mount Gravity Drain*	1-2
8	Filter Bypass Valve	1
9	Gravity Drain	1

*One drain per stackable tank



TO ORDER:

LMS

LM	C Upper Unit												
LM	B Middle Unit												
LM	A Lower Unit												
		Box 1	Box 2	Box 3	Box 4	Box 5	Box 6	Box 7	Box 8	Box 9	Box 10	Box 11	Box 12

Tank Size [Box 2]

Code	Description
75	75-gallon steel tank (stackable three-high)
150	150-gallon steel tank (non-stackable)
300	300-gallon steel tank (non-stackable)

Drain & Fill Connector Type [Box 4]

Code	Description
B	ISO B Connector
A	ISO A Connector
F	Flush Face Connector
R	ISO B Connector-BSPP
Q	ISO A Connector-BSPP
P	Flush Face Connector-BSPP

NOTE: All connectors are coupler ends (female)

Tank Incoming/Suction Connection Size [Box 5]

Code	Description
1	Drain: 1" hose & connection Fill: ¾" hose & connection
2	Drain: ¾" hose & connection Fill: ½" hose & connection

NOTE: Units are built for optimum performance when using 1" (drain) and ¾" (fill) connections. Decrease in performance may occur when selecting other size combinations. Hoses are 1" and ¾" respectively regardless of connection sizes.

Pump/Motor Combinations [Box 3]

60 Hz Options

Code	Description
02E	2gpm/1 hp electric, 115 vac, 60 Hz, 1725 rpms, 13 amps
02F	2gpm/1 hp electric, 230 vac, 60 Hz, 1725 rpms, 6.5 amps
05E	5gpm/1 hp electric, 115 vac, 60 Hz, 1725 rpms, 13 amps
05F	5gpm/1 hp electric, 230 vac, 60 Hz, 1725 rpms, 6.5 amps

50 Hz Options

02G	1.5gpm/1 hp electric, 110 vac, 50 Hz, 1425 rpms, 12.4 amps
02H	1.5gpm/1 hp electric, 220 vac, 50 Hz, 1425 rpms, 6.2 amps
05G	4gpm/1 hp electric, 110 vac, 50 Hz, 1425 rpms, 12.4 amps
05H	4gpm/1 hp electric, 220 vac, 50 Hz, 1425 rpms, 6.2 amps

NOTE: Performance will vary depending on operating temperature, fluid type and unit options. Call Des-Case for assistance in choosing a flow rate specific to your needs.

Options 6-12 located on reverse.



TO ORDER:

LMS

Filter A [Box 6]/Filter B [Box 7]

Code	Description
K	3-micron Particulate Filter
L	6-micron Particulate Filter
M	12-micron Particulate Filter
N	25-micron Particulate Filter
W	Water Filter

Manual Filter Bypass [Box 8]

Code	Description
0	None
B	Filter Bypass

Sample Valves [Box 9]

Code	Description
0	None
1	Standard Minimes
2	High Viscosity

Manual Gravity Drain [Box 10]

Code	Description
0	None
D	Gravity Drain

Level Switches [Box 11]

Code	Description
0	None
1	Level Switches
2	Level Switches and Pump Timer

Breather Filters [Box 12]

Code	Description
2*	3-micron particulate desiccant breather [DC-2]
3	3-micron particulate desiccant breather [DC-3]
4	3-micron particulate desiccant breather [DC-4]

*Standard

Replace Your Elements

Part No.	Micron Rating
FC-KF	Beta 200 @ 3um
FC-LF	Beta 200 @ 6um
FC-MF	Beta 200 @ 12um
FC-NF	Beta 200 @ 25um
FC-WF	Water Removal

NOTE: Other micron sizes available upon request

You also can customize your system online at www.descase.com.



FLUID HANDLING:

The Entire Des-Case Line

We offer a full range of fluid handling and filtration products in Portable Filtration, Dedicated Filtration, Water Removal, Lubricant Storage & Filtration, Filter Elements, and Adapter Kits to suit your needs.

**Customize your system today at
www.descase.com.**