

L SERIES: Drain Sampling Valve



Lubrication Technologies, Inc.
 120 Bosworth Street
 West Springfield, MA 01089
 413-788-LUBE (5823)
 Fax 413-218-5823
 www.LubeTechnologies.com



Low Profile High Flow Sampling

Compact

- Only 16mm (0.63") clearance required. Less than half required by most diagnostic valves.
- Design can be inserted into large diameter drain plugs or custom manufactured to fit a variety of port threads.

Fast

- Allows high flow for heavier oils. Nominal diameter equivalent to 1/4" ID hose assembly.
- Draws 16x more flow than KST, KP & B series valves

Safe

- Heavy duty dual sealed valve with backup hex cap.
- Sampling to 150psi, pressure rated to 3000psi.

Clean

- Flushface patented valving can be easily wiped clean.
- For insert styles the recessed valve area has an optional dust cover.
- Drain and fill capability provides a closed system to avoid opening up the system to environmental contamination.

Accurate

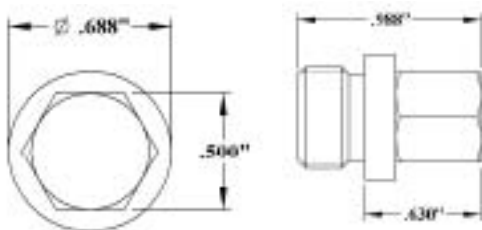
- Hot fluid consistently taken from a standard location can improve sampling accuracy.
- Reusable thread-on probe and disposable 1/4" OD PVC tubing avoids cross contaminating samples from different systems.

Easy to Install



Remove existing drain or fill plugs. Replace plug with a L insert plug. L plugs allow removal for draining or fluid replacement.

Warning: Any protrusion beyond existing plug may subject the valve and cap to shear forces from rock or debris.



Easy to Collect

- Sample only hot fluid. For mobile applications ensure the port is in the low position.
- Remove L series cap by hand or socket wrench. Thread on LF swivel probe and tube.
- Hold sampling bottle below the fluid level in the housing to allow the fluid to collect.

Check Fluid Level

- Hold sample bottle above the fluid level.
- Unthread probe and replace cap.

Specifications

Specification	Value
Sampling Pressure Range	-12psi to 150psi (-0.83 to 10bar)
Max Operating Pressure	3000psi (207bar)
Max Burst Pressure	9000psi (615bar)
Materials	Steel, Nickel Plated
Viton™ Seal Temperature	-55 to +400°F (-31.67 to 204°C)
Minimum Particle Restriction	15000 microns
Body Size	0.160" (4.06mm)

Fluid Fill

- L Plugs can also be used in fill ports for low contamination fluid top ups.

Equipment

- Wheel Loaders
- Industrial Gearboxes